

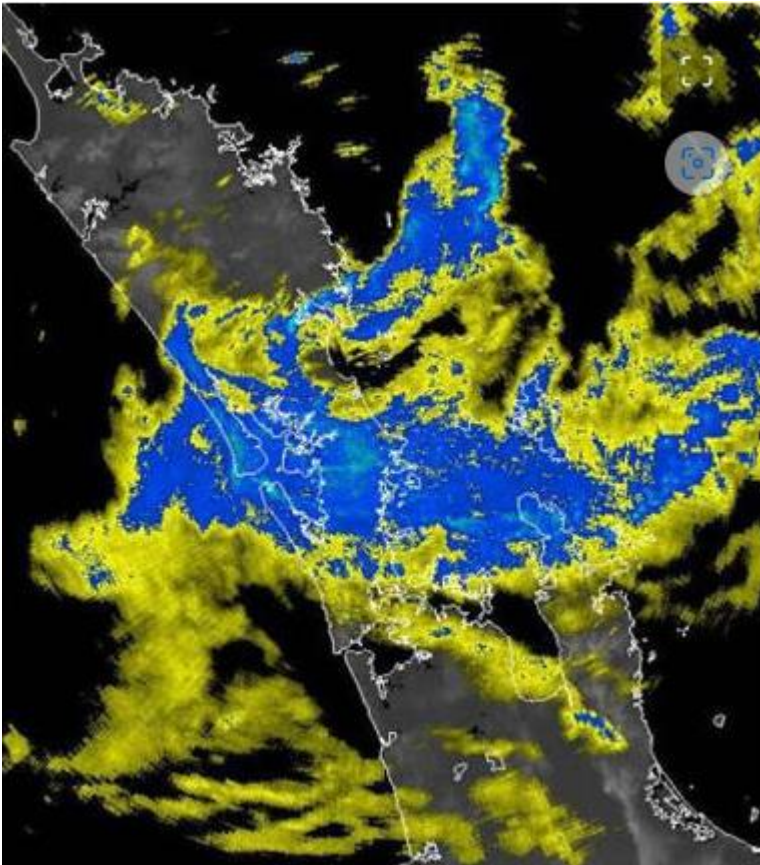
New Zealand / Auckland / North Island – 31st JANUARY 2023

Please be advised of the following information received from our office in New Zealand.

Please note that the Auckland and most of the central and upper North Island has been hit by flooding and road closures over the past 3 – 5 days and this is now impacting delivery times in some areas. Because Auckland is our only entry point and Hub, this will follow through to lower North Island and the South Island. The unprecedented weather event that took place in the Auckland region over the weekend has caused widespread damage from flooding and torrential rain, impacting many homes, businesses, and critical infrastructure.

Many roads remain closed across Auckland, including key rail links, which will have an impact on passenger and freight movements. In Northland SH1 between Brynderwyn and Waipu is closed due to slips. In the Coromandel SH25A from Kopu and Hikuai is closed until further notice following the collapse of a large section of road affecting deliveries to the wider Coromandel area.

The impact of this has been slightly reduced due a Public holiday in Auckland on Monday Jan 30th which coincided with the problems incurred. Much of the delivery system is now returning to normal but expect delays across all routes.



We will continue to update you as we receive further updates and hope to be back to normal service soon. If you require any further assistance, please email our cs team:- cs@skynetworldwide.com